

Geology of the Elliot Bay Area

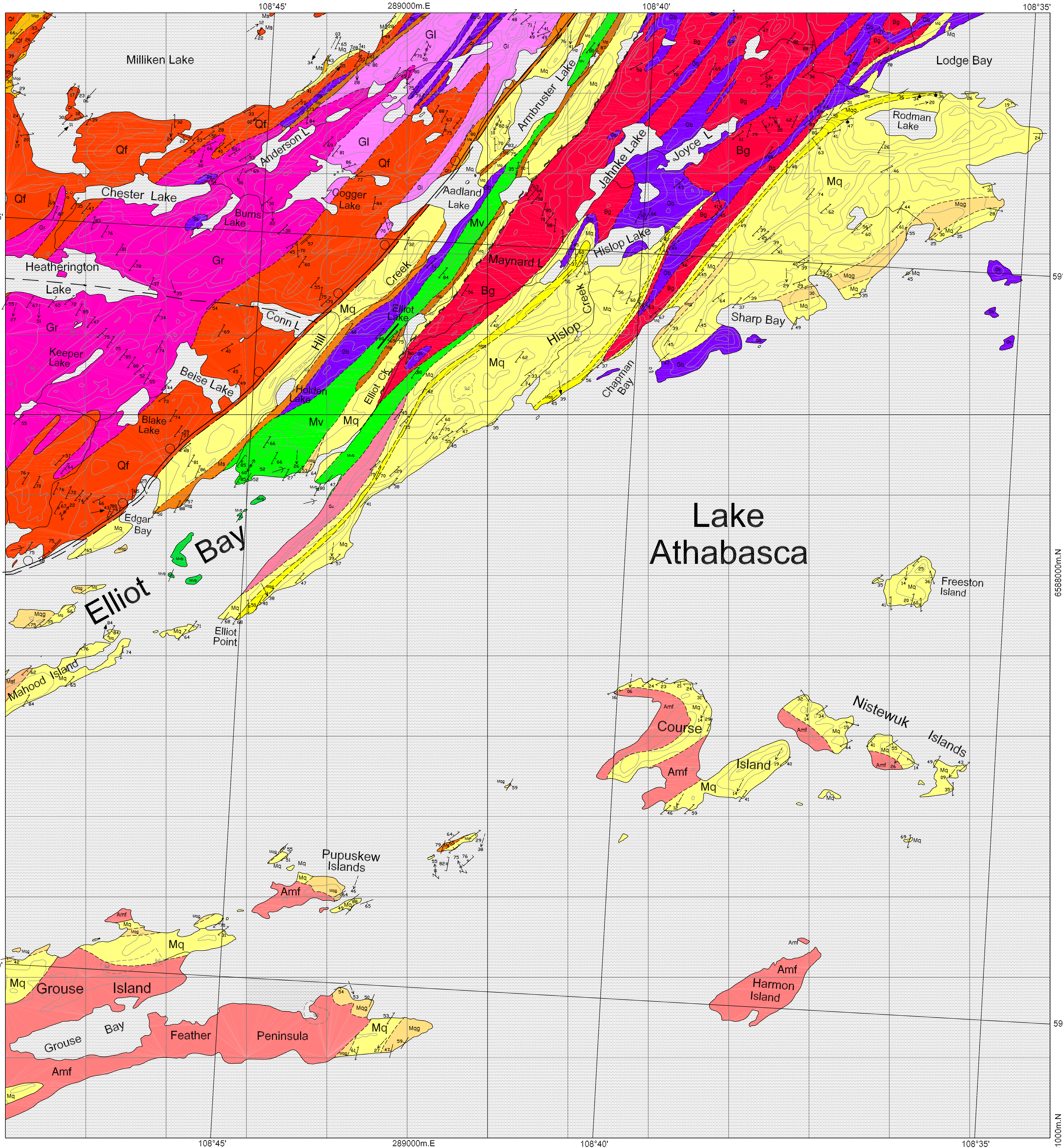
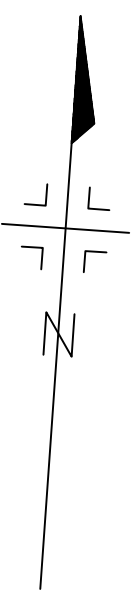
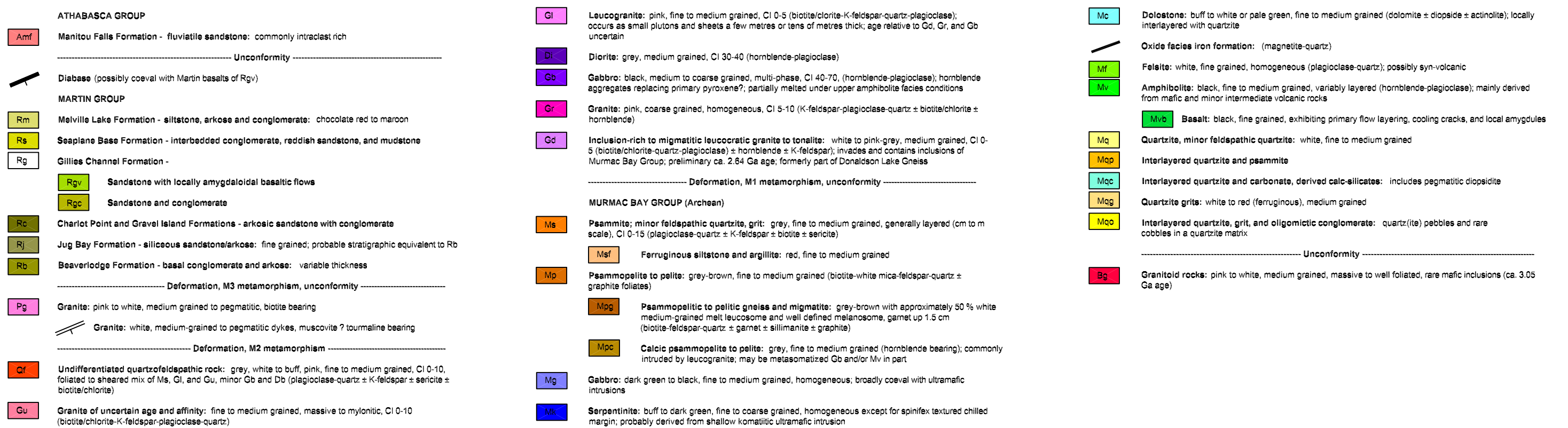
(Part of NTS 74N/7 and 10)

at 1:20 000 scale

Preliminary Geological Map (2000)

by K.E. Ashton, J. Kraus, and R. Morelli

Catalogue Number 2000-4.2 (3-4)



Although the Department of Energy and Mines has exercised all reasonable care in the compilation, interpretation, and production of this map, it is not possible to ensure total accuracy, and all persons who rely on the information contained herein do so at their own risk. The Department of Energy and Mines and the Government of Saskatchewan do not accept liability for any errors, omissions, or inaccuracies that may be included in or derived from this map.

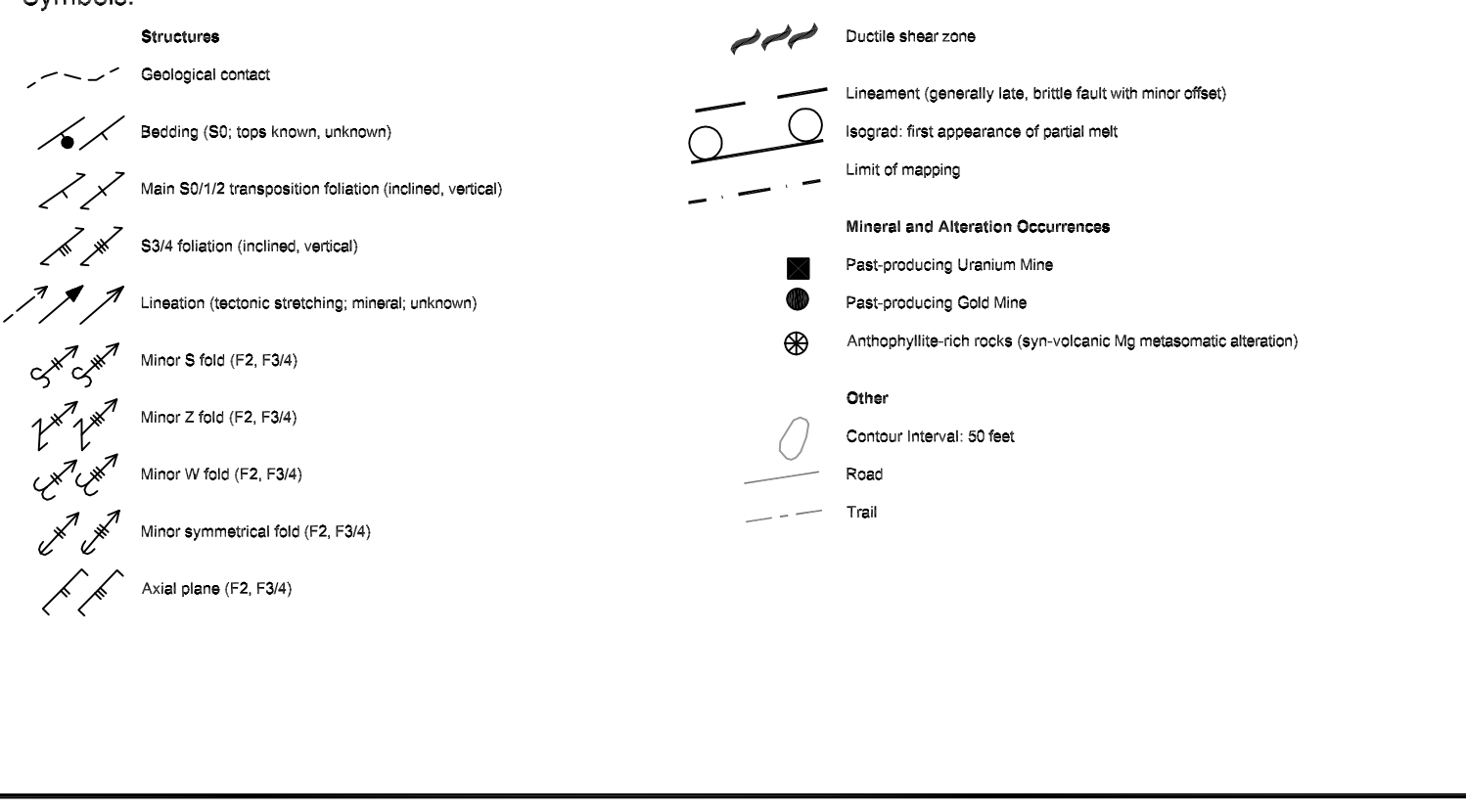
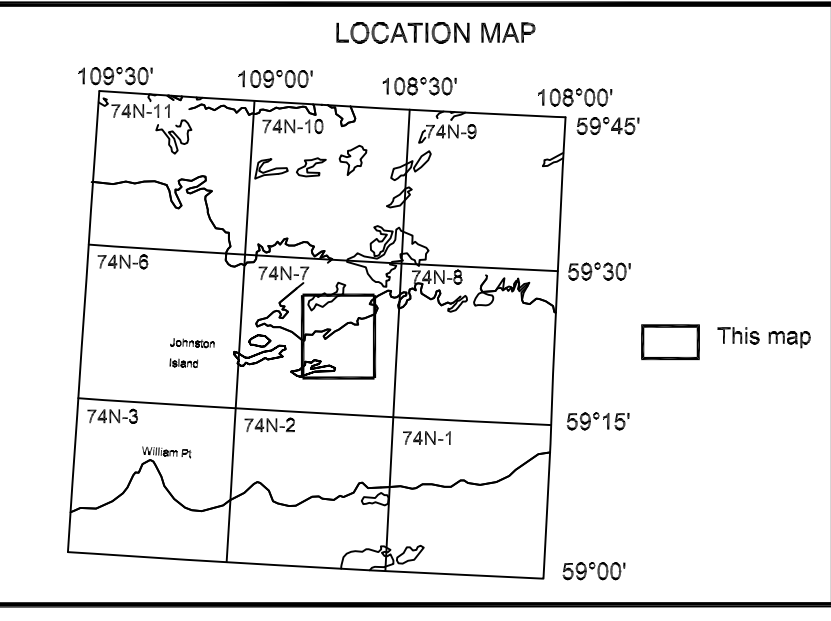
Project M-123 of 2000, Database No. 0047

The area was mapped by K.E. Ashton (project leader), J. Kraus, R. Morelli, and R.P. Hartlaub, in the summer of 2000, with the assistance of E. Chorney, S. Ehman, D. Bovin, and A. Yanko.

This map was printed from the geologist's digital file. Geological data were processed using Fieldlog version 3.0 provided by the Geological Survey of Canada. Base maps were compiled from 1:20 000 scale digital topographic maps loaned from Saskatchewan Land Information Services Corporation. The map was processed overall using AutoCAD Release 14 software.

The map is issued in a package with the Summary of Investigations 2000 Volume 2, Saskatchewan Geological Survey, and is available separately.

This map may be referenced as part of the following publication:
Ashton, K.E., Kraus, J., Hartlaub, R.P., and Morelli, R. (2000). Uranium City revisited: a new look at the rocks of the Beaverlodge Mining Camp, in Summary of Investigations 2000 Volume 2, Saskatchewan Geological Survey, Sask. Energy Mines, Misc. Rep. 2000-4.2.



Other major sources used in the compilation of this map:

Hartlaub, R.P. (1999). New insights into the geology of the Murmac Bay Group, Rose Province, northwest Saskatchewan, in Summary of Investigations 1999, Saskatchewan Geological Survey, Sask. Energy Mines, Misc. Rep. 99-2, p17-28.

Macdonald, R. and Simmon, W.L. (1985). Bedrock geology of the Greater Beaverlodge Area, NTS 74N/6 to 11, Saskatchewan Energy and Mines, Map 341A, scale 1:50 000.

Sibbald, T.J. (1982). Uranium metamorphic studies, Nicholson Bay area, in Summary of Investigations 1982, Saskatchewan Geological Survey, Sask. Energy Mines, Misc. Rep. 82-4, p43-45.

Sibbald, T.J. (1984). Gold metamorphic studies, Goldfields area, in Summary of Investigations 1984, Saskatchewan Geological Survey, Sask. Energy Mines, Misc. Rep. 84-4, p18-21.

Sibbald, T.J. and Leary, J.F. (1980). Uranium metamorphic studies, Lodge Bay area, Lake Athabasca, in Summary of Investigations 1980, Saskatchewan Geological Survey, Sask. Energy Mines, Misc. Rep. 80-4, p41-43.

Thomas, D.J. (1982). Uranium metamorphic studies, Miley Lake area, in Summary of Investigations 1982, Saskatchewan Geological Survey, Sask. Energy Mines, Misc. Rep. 82-4, p51-53.

Geology of the Elliot Bay Area
(Part of NTS 74N/7 and 10) at 1:20 000 scale
Preliminary Geological Map (2000)
by K.E. Ashton, J. Kraus, and R. Morelli

Catalogue Number 2000-4.2 (3-4)